



HUNTER
CONTINUOUS INSULATION

Hunter Xci Product Line

Hunter Panels Xci polyiso products meet the continuous insulation standards prescribed in ASHRAE 90.1-2010 and IECC 2012 for commercial exterior wall applications and IBC Building Code Chapter 26. Products have been NFPA 285 tested. For more information go to www.hunterpanels.com.

Hunter Panels Xci Foil

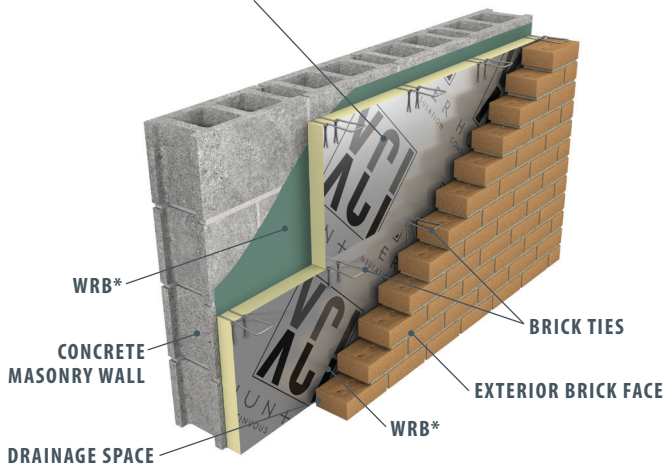
Polyisocyanurate Insulation Manufactured On-Line to Foil Facers

APPLICATIONS

- Provides continuous insulation (ci) for standard wood frame, FRT wood frame, steel stud, CMU and concrete exterior wall constructions
- Available thicknesses 1"–3", R values 6.5–20.3
- Suitable for masonry cavity wall applications

Note: Xci Foil is not suitable for exposed interior applications.

HUNTER PANELS Xci FOIL



Hunter Panels Xci Class A & Xci 286

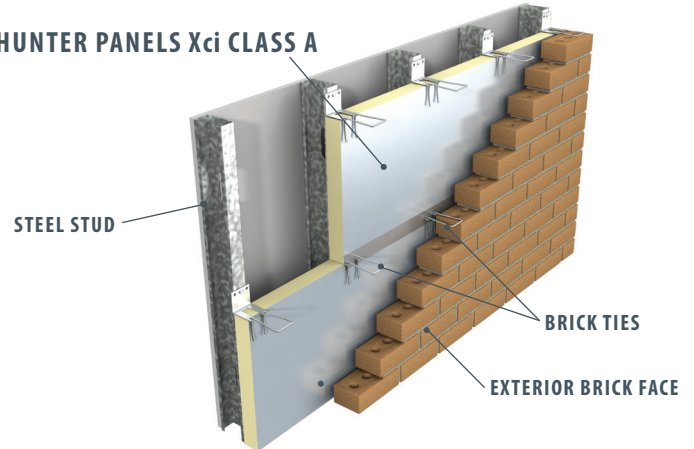
Class A Polyisocyanurate Insulation Manufactured On-Line to Foil Facers

APPLICATIONS

- Can be installed directly on steel studs in a variety of wall assemblies without the need for gypsum sheathing
- Flame Spread <25 per ASTM E 84
- Provides continuous insulation (ci) for standard wood frame, FRT wood frame, steel stud, CMU and concrete exterior wall constructions
- Suitable for many commercial wall assemblies
- Available thicknesses 1"–3.5", R values 6.3–23.0

Note: Xci Class A is not suitable for exposed interior applications. Xci 286 is suitable for exposed wall or ceiling interior applications

HUNTER PANELS Xci CLASS A



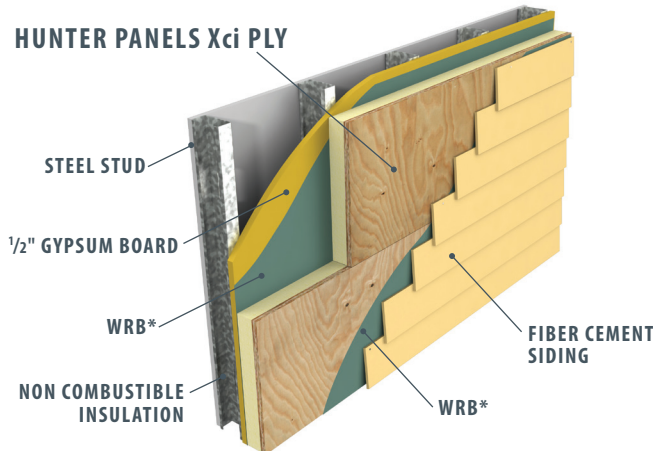
Hunter Panels Xci Ply

Polyisocyanurate Insulation Bonded to Fire Treated Plywood

APPLICATIONS

- Provides continuous insulation (ci) for standard wood frame, FRT wood frame, steel stud, CMU and concrete exterior wall constructions
- Optimal substrate for mechanically attaching cladding materials
- Suitable for many commercial wall assemblies
- Available thicknesses 1.6"–3.7", R values 6.6–19.1

HUNTER PANELS Xci PLY



Hunter Panels Xci CG

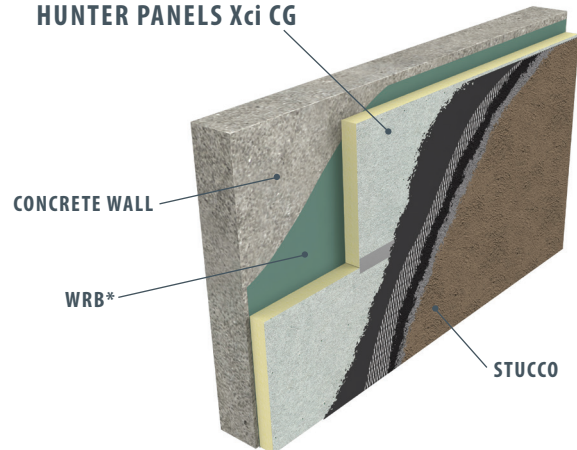
Polyisocyanurate Insulation Manufactured On-Line to Premium Performance Coated Glass Facers

APPLICATIONS

- Provides continuous insulation (ci) for standard wood frame, FRT wood frame, steel stud, CMU and concrete exterior wall constructions
- Suitable for many commercial wall assemblies
- Available thicknesses 1"–3.5", R values 6.0–21.7

Note: Xci CG is not suitable for exposed interior applications.

HUNTER PANELS Xci CG



0416

*The location and number of WRB's in the wall assembly are determined by the architect. Contact Hunter Panels for a list of approved WRB's for each assembly.