

# POLYISOCYANURATE FACER GUIDE

## FIBER REINFORCED PAPER FACER (BLACK)



- Highest Recycled Content (LEED)
- Most Economical Facer
- ASTM C 1289 Type II Class I

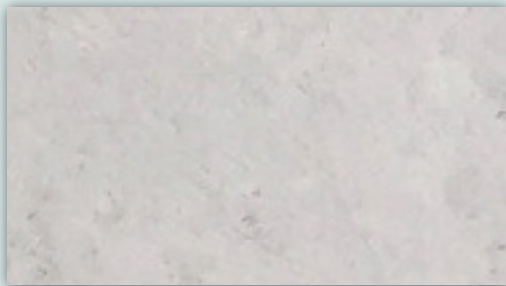
### Systems

Single-Ply  
Modified Bitumen  
BUR  
Standing Seam

### Products

H-Shield  
H-Shield NB  
Cool-Vent  
Cool-Vent II  
Tapered H-Shield  
Hinged Target Sump  
Straight or Bevel Cut H-Shield

## COATED GLASS FACER



- Premium performance facer and superior facer to foam bond
- Better coverage rate with adhesives
- Increased moisture resistance and dimensionally stable
- Inorganic
- Meets UL Class A direct to the combustible deck with 3" w/o the use of fire rated slip sheet or gypsum cover board
- Meets UL Class B with minimum 1.9" thickness
- Passed (10) Resistance to Mold test ASTM D 3273
- Used when H-Shield NB and Cool-Vent require FSC® compliant wood products
- ASTM C 1289 Type II Class 2

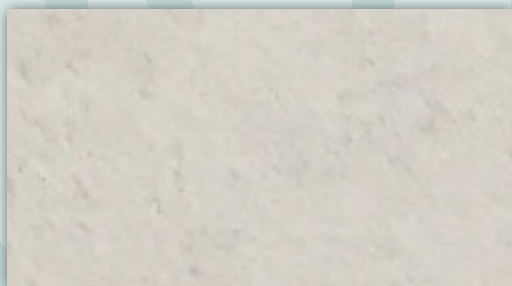
### Systems

Single-Ply  
Modified Bitumen  
BUR  
Standing Seam

### Products

H-Shield CG  
H-Shield NB  
Tapered H-Shield CG  
H-Shield HD  
H-Shield HD Composite CG  
Cool-Vent  
Hinged Target Sump  
Straight or Bevel Cut H-Shield

## PREMIER FACER



- Extra durable - double coated CG Facer
- Better coverage rate with adhesives
- Increased moisture resistance and dimensionally stable
- Meets UL Class A direct to the combustible deck with 1" w/o the use of fire rated slip sheet or gypsum cover board
- Passed (10) Resistance to Mold test ASTM D 3273
- ASTM C 1289 Type II Class 2

### Systems

Single-Ply  
Modified Bitumen  
BUR  
Standing Seam

### Products

H-Shield Premier



**HUNTER**  
Energy Smart Polyiso

15 FRANKLIN STREET, PORTLAND, MAINE 04101  
TF 888.746.1114 F 877.775.1769 · HUNTERPANELS.COM